



Our History

In 1968, the New Jersey Legislature established the Educational Opportunity Fund (EOF) to make collegiate experiences possible for individuals who would not otherwise have such opportunities. A distinct difference between EOF and other state aid programs is the offering of financial assistance, support services, help with developmental coursework, tutoring, and counseling. Most EOF programs also offer an essential pre-college summer program that consists of an intensified academic program, orientation, counseling, and tutoring. In addition, special summer programs are offered in the areas of pre-law, pre-medical/pre-dental, business, and bio/medical career studies.

The New Jersey Office of the Secretary of Higher Education administers the EOF program, and the State EOF Board sets policies and regulations for the general program administration. The program is campus-based and offered on multiple college campuses throughout New Jersey. Each institution is responsible for student recruitment, selection, program services, and its own criteria for EOF admission and program participation.

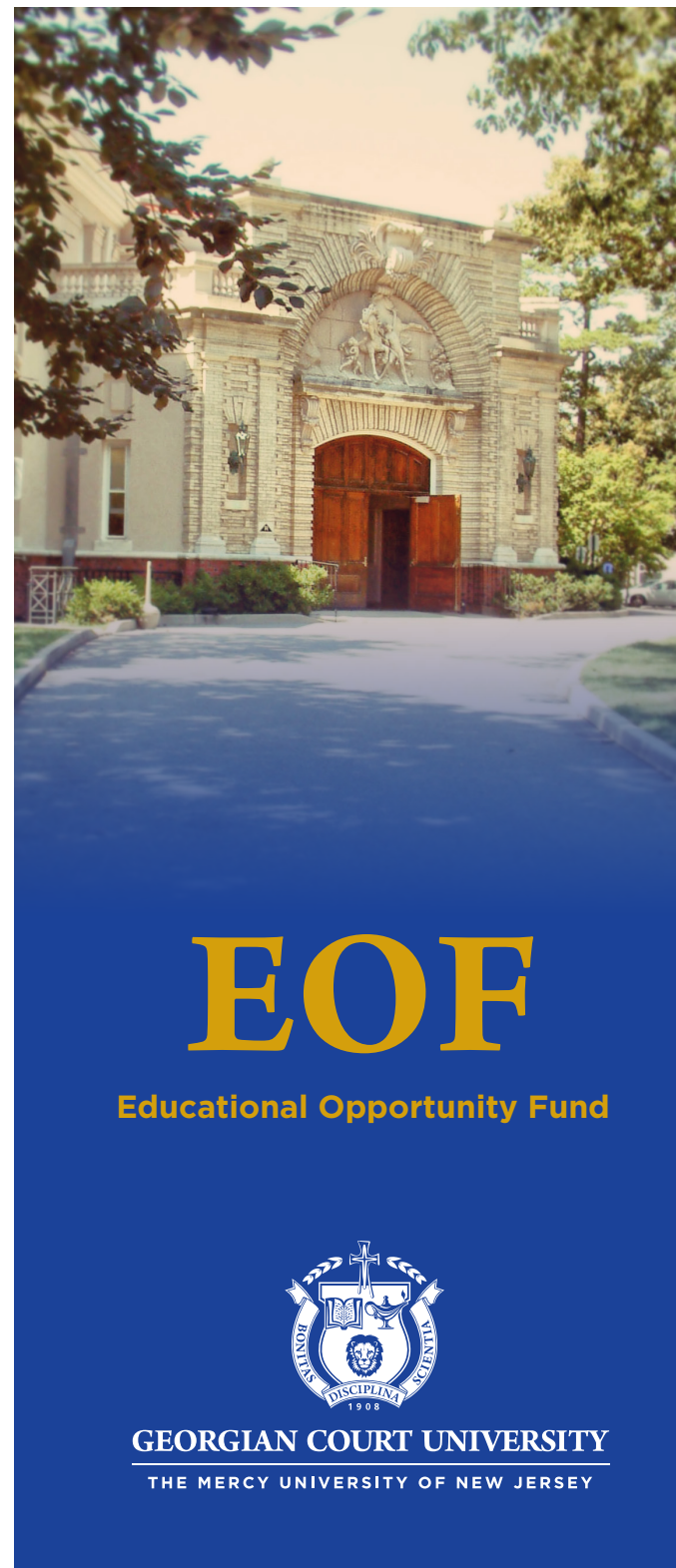
Contact Us

georgian.edu/educational-opportunity-fund
732.987.2355

GEORGIAN COURT UNIVERSITY

THE MERCY UNIVERSITY OF NEW JERSEY

900 Lakewood Avenue
Lakewood, NJ 08701-2697
www.georgian.edu



EOF

Educational Opportunity Fund



GEORGIAN COURT UNIVERSITY

THE MERCY UNIVERSITY OF NEW JERSEY

Our Mission

Consistent with the New Jersey Office of the Secretary of Higher Education (OSHE)/Equal Opportunity Fund (EOF), Georgian Court University is committed to aligning educational opportunities to students who meet the EOF academic and financial eligibility criteria. The university provides these students with a comprehensive liberal arts education in the Roman Catholic tradition.

The EOF program also offers academic and educational advisement, tutoring, leadership development initiatives, and a financial aid supplemental grant—all designed to promote persistence through degree completion and the pursuit of their future careers.

Our Vision

The EOF program at Georgian Court University's vision is to provide educational access and opportunity to promising New Jersey residents from under represented populations throughout the State of New Jersey. It is also our commitment to offer support services aimed at improving students' personal, social, professional, and academic success throughout their higher education journey.

Our Goals

Recruit

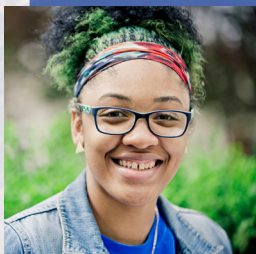
- Provide educational opportunities for academically and financially disadvantaged students.

Retain

- Create a comprehensive and quality academic experience that will enhance each student's ability to graduate.

Graduate

- Monitor and assist in academic advisement to ensure persistence in meeting the timeliness of degree completion.



Ebonie Puryear '16

I chose Georgian Court because it was a small school. I knew for a fact that I could not survive a bigger school. In all seriousness, I came in as an Education major, and they have such a good reputation for that. My favorite part about Georgian Court is the

'one on one' help that they give me. Every time I struggle, there is someone on the campus to support me and lend a hand to help. Georgian Court is my home.

Applying for the EOF Program

You must apply to the university and indicate that you are interested in the EOF program. This can be done in person at the Office of Admissions or online at www.georgian.edu. If you require assistance, please contact our office at 732.987.2355. You may also review additional information for program eligibility at: www.oshe/eof.org.

The EOF staff is also available to meet and discuss your needs, concerns, and aspirations for obtaining a higher education degree. Our office is located on the first floor of the Sister Mary Joseph Cunningham Library. Stop by and get to know us!

Qualifying for the EOF Program at GCU

You may qualify to participate in the EOF program if

- you have lived in New Jersey for at least a year;
- you are a high school graduate or have a GED;
- you are a U.S. citizen or otherwise eligible;
- you reside in a state-identified target recruitment area;
- show academic and financial need; and
- are a full-time, matriculating student carrying 12 credits or more per semester.

Preference will be given to students with a minimum combined SAT score of 800 and a minimum 2.5 GPA or higher.

What We Offer

- Pre-freshman summer program
- State award up to \$2,500 and institutional aid
- Support services (i.e., tutoring, academic coaching, and personal and social enrichment.)

EOF Funding and Application Process

EOF grants are available to eligible undergraduate and graduate students. If you are interested, please complete the Georgian Court University application for admission, and submit the Free Application for Federal Student Aid (FAFSA), which must be completed online at www.fafsa.ed.gov.

Once your application for GCU has been completed and you have been accepted, you will receive a separate notification of your acceptance into the EOF program. You must also complete the EOF application.

If selected for verification, you must upload ALL requested documents immediately to the Higher Education Student Assistance Authority (HESAA) and send copies to the GCU Office of Financial Aid. Call 609.584.4480 or visit www.hesaa.org for additional information regarding student aid. GCU's priority deadline for financial aid is April 15. Completing your FAFSA by this date will optimize your chances of receiving financial and institutional aid.

EOF participants receive a generous financial aid package. State funding is available for up to 12 semesters (TAG 10 semesters; EOF 12 semesters) for the first bachelor's degree. Students are expected to take responsibility for a portion of their financial obligation. The program will provide counseling, if needed, in the financial process.

All students must maintain satisfactory academic progress as outlined in the Georgian Court University Undergraduate Catalog to remain eligible for all financial aid programs.

